



OLW NEWS 2018

Tel: 9460 6684
Email: principal@olwkingsbury.catholic.edu.au

Issue: 1

Date: Monday February 5 2018

Dear Parents & Families,

Welcome to the start of the 2018 School Year. It has been an extremely smooth start to the year with all students, including our new Preps, settling in very well. We welcome Mrs Sonia Mason and Miss Melanie Kent and know that you will make them feel very welcome at OLW. We also welcome our new students in other levels of the school and hope they enjoy a happy and productive time whilst at OLW.

SCHOOL APP

Our OLW School App information is attached to the newsletter. Parents can download the App to their smartphone. Once you have downloaded 'Flexibuzz' and selected OLW from the Primary School section, just select the tabs appropriate to your child's class. During the year we will send out notifications and the weekly newsletter to keep you connected to what's happening at OLW. Current users will need to check and update your child's 2018 class level to continue receiving posts.

STUDENT LEADERSHIP

Our School Captains and Vice Captains for 2017 were announced at the End of Year Mass last year. Andy Huynh and Shireen Yelburga are our School Captains, and Uvindu De Alwis and Nicole Massimo are our Vice Captains. We congratulate them on their selection and wish them well in these important positions. In the next few weeks we will be calling for our senior students to nominate for the roles of House Captain and Vice-Captain, FIRE Carriers and SRC.

BEFORE & AFTER SCHOOL CARE

If your child is attending the Before and/or After School Care Program please notify the school Office as soon as possible. We also keep a list of students who attend the Program, showing on what days of the week they attend. This reduces confusion and enables us to know where each child is after school.

We understand that in some cases there is casual use of the program, however we still need to have information from parents about the use of the program. Please return the form in this newsletter as soon as possible. If any families wish to access this Program, Enrolment Forms for OSC are available online. Details are attached.

CONTACT & EMERGENCY DETAILS

If there is a change of address, mobile number, home or work phone number during the year please notify the office as soon as possible so that our records can be updated in case of emergency.

SCHOOL SWIMMING PROGRAM

Our school swimming program commenced today for Years 3 – 6 and continues each Monday during Term 1 until Monday, March 26.

SCHOOL ASSEMBLY

Our whole school assembly takes place each MONDAY AFTERNOON at 3.10pm. This will enable parents to attend the Assembly prior to collecting their child. At Assembly we gather in Prayer which is led by the School Captains, and this is then followed by the presentation of Student Awards and general reminders. Everyone is most welcome to attend.

BEGINNING OF YEAR MASS

Our Beginning of Year Mass will be held in conjunction with the Ash Wednesday Mass on Wednesday February 14 at 10.00am. Everyone is most welcome to join us!

STAFF LEAVE

I will be on leave for the next week or so to undergo some minor ear and nose surgery so please see Anna or Tony if you require any help during my absence and they will be able to assist you.

Enjoy the start of a new and exciting school year!

Kevin Burke

OLW SCHOOL PRAYER

**MARY OUR MOTHER,
YOU ARE THE MOTHER OF GOD,
THE MOTHER OF JESUS,
YOU CARED FOR HIM,
YOU REACH OUT AND CARE FOR US.
AS OUR MOTHER YOU ARE
A SPECIAL PERSON IN OUR LIVES.
HELP US TO WORK AND PLAY
HAPPILY TOGETHER.
SHOW US THE WAY
AND LEAD US TO JESUS
OUR LADY OF THE WAY PRAY FOR US**

RELIGIOUS EDUCATION NEWS

SACRAMENTAL DATES FOR 2018

The dates for the Sacraments for students who have been baptised in the Catholic Church have been set for 2018. They are as follows:

Sacrament of Penance (Reconciliation) for Year 2 students will take place on Tuesday 30th October at 7:00pm. A Commitment Mass for this Sacrament will take place on Sunday 14th October at the 10:00am Parish Mass.

Sacrament of First Eucharist (First Communion) for Year 3 students will take place on Sunday 27th May at 11:30am. A Commitment Mass for this Sacrament will take place on Sunday 6th May at the 10:00am Parish Mass.

Sacrament of Confirmation for Year 6 students will take place on Thursday 30th August at 7:00pm with Bishop Terry Curtin as the celebrant. A Commitment Mass for this Sacrament will take place on Sunday 5th August at the 10:00am Parish Mass.

PHYS ED LESSONS

Physical Education lessons will be held on **WEDNESDAY** this year. Students are asked to wear their sports uniform and runners each **WEDNESDAY**.

OLW CONTAINER SYSTEM (INFORMATION SENT / RECEIVED FROM / FOR ALL PARENTS)

At OLW, every classroom has OLW container. The container system is used for transferring all money, messages, notes to the office or teachers, etc, that your child brings to school on specific days. At the beginning of the day the classroom container is sent to the office for the correspondence, messages, money, etc to be dealt with. Before the final school bell the containers are collected from the office and all receipts, replies, newsletters, etc are taken back to the classrooms. We feel this is a great starting point for children to learn about responsibilities, and less interruption at the office.

Please encourage children to place all messages, etc into OLW classroom containers.

LATE ARRIVALS / EARLY LEAVERS SIGN – INFORMATION FOR PARENTS

We ask all parents to sign this book if your child has arrived late at school, leaving during school hours for appointments or leaving school early. This book is kept at the front office.

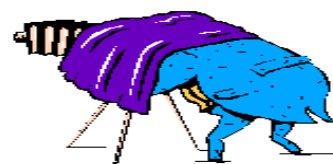
Thank you.

MEDICATION REGISTER BOOK:

At Our Lady of the Way, we are required by law to have a medication register book. When your child requires medication, we require a parent / guardian to fill out this book on what medication your child requires and when the medication is required. This must be completed every day your child requires medication.

If your child is sick and you cannot sign the register book your child will need to remain at home.

SCHOOL PHOTOS



Our Lady of the Way school photo day will be on **Tuesday, March 6, 2018**
More details will follow.

2018 FAMILY SCHOOL FEES

2018 FAMILY SCHOOL FEE will be:
\$1400.00 per family.

The breakdown of the Fee is:-

FAMILY FEE \$1250.00

REFURBISHMENT \$100.00

WORKING BEE \$50.00

(Please note that \$50.00 will still be refunded if families attend at least one Working Bee during the year.)

STUDENT LEVY FEE

In 2018 the Student Levy per child will be \$400.00

The Levy cost covers programs such as the swimming program, excursions, incursions, Phys Ed equipment and Art materials etc.

As always, families are able to pay by direct deposit, credit card, eftpos, cash or cheque. Families who wish to set up a payment plan are most welcome to contact the school office to organise this with Anna. Our banking details are listed below for those who wish to set up their own internet banking. Please include your eldest child's full name as the reference.

School Banking Details:

Bank: National Australia Bank Ltd

BSB: 083 347

Account No: 691378781

Also Enclosed is a Direct Debit Request Form. – An Authorised Form to pay school fees electronically.

If you have any concerns with the school fees or payments, please let the office know so that an appointment can be arranged with the principal.

SCHOOL LUNCHES

Red Door Café will supply and deliver lunches to the school. Families will need to set up an account with the shop to be able to order their child's lunch.

BE SUNSMART – WEAR A HAT!

The School Hat must be worn during Term 1 and in Term 4. Children who do not have a school hat are asked to sit under the verandah at recess and Lunchtime. (i.e. No Hat, No Play)

CSEF - CAMPS, SPORTS AND EXCURSIONS FUND

CSEF will be provided by the Victorian Government to assist eligible families to cover the costs of school trips, camps and sporting activities.

If you hold a valid means-tested concession card you may be eligible for CSEF. The allowance is paid to the school to use towards expenses relating to camps, excursions or sporting activities for the benefit of your child.

The annual CSEF amount per student is \$125 for primary school students.

If you applied for the CSEF at this school in 2017 **YOU DO NOT NEED TO COMPLETE AN APPLICATION FORM IN 2018**, unless there has been a change in your family circumstances.

For new families please complete the CSEF form.

★ Please read attached information from the Education State for Financial assistance for parents.

PARENTS & FRIENDS ASSOCIATION NEWS

FEBRUARY SILVER COIN CHALLENGE

To start the year off we will be running our Silver Coin Classroom fundraising challenge in the month of February. Bring to school all the 5, 10 and 20 cent pieces you have been saving or collecting.

The class who raises the most money will receive the perpetual trophy and a free hot chip lunch. Who will be the winning classroom this year?

ICY POLES

Icy poles will be sold during lunchtime each **TUESDAY AND THURSDAY** for Term 1 commencing this Thursday. The cost of an icy pole is 50 cents.

OLW COMMONWEALTH BANK SCHOOL BANKING

Just a reminder that the school banking will continue on **Wednesdays** during the school terms. For new families you can go to the bank or online to register for your child to have an OLW school banking account.

SPORTING SCHOOLS PROGRAM

Extra-Curricular Sporting Schools Program (at no cost to families) for Term 1 will be on **Tuesdays**, commencing February 13 and will end on Tuesday 27 March from 3.45 to 4.45 pm for students in Years 1-6. Our sport this Term is Netball. Fruit will also be provided.

Please complete the attached Permission and Medical Form sent home for your child to participate and return the form to the office as soon as possible.

BEFORE & AFTER SCHOOL CARE

ENROLMENT:

The enrolment process is now available through the OLW school website at: <http://www.olwkingsbury.catholic.edu.au/location-and-contacts/20/p/before-after-school-care/>

Families can download the **My Family Lounge** app from the itunes store or google play store and book their children in using the MyLounge app.

The link for the website is:

<https://www.qkenhanced.com.au/webui/Account/Embeddable/?databaseId=708>

BEFORE / AFTER CARE REPLY SLIP:

Please return this reply slip to the OLW School Office.

Yes, my child / children will use the after school care / before school care on:

PLEASE TICK (✓)

MONDAY	A.M.....	P.M.....
TUESDAY	A.M.....	P.M.....
WEDNESDAY	A.M.....	P.M.....
THURSDAY	A.M.....	P.M.....
FRIDAY	A.M.....	P.M.....

FAMILY SURNAME:

CHIKD/REN:

SIGNATURE:



ATTENTION ALL GIRLS & WOMEN!

COME & TRY AFL & SOCCER

DAREBIN WOMEN'S SPORTS CLUB

COME & TRY DAY

Sunday 18 February

Girls Soccer: 9-10am | Girls Footy: 10-11am
A.H. Capp Reserve, Hailwyn Cres, Preston

Darebin Women's Sports Club is welcoming women and girls of all ages and abilities to play AFL and SOCCER in 2018!

AFL
• Junior teams
• Auskick, U10's, U12's, U14's, U16's, U18's

SOCCER
• Girls only mini-roos clinic for ages 4-10

★ PLACES FOR 2018 ARE LIMITED SO REGISTER YOUR INTEREST TODAY! ★

Come and give soccer and footy a go! For more info contact info@falcons.org.au



KINGSBURY TENNIS CLUB

FREE TENNIS DAY SUNDAY 11th FEB

Free play for all. Play like a Champion.

Family Day for all.

Introduction to Hot Shots, coaching tips, prizes and giveaways with plenty of opportunities to get on court. Our club welcomes everyone, so bring your friends, your family and the neighbours.

Kingsbury Tennis Club
Browning St Kingsbury
(opposite Mini Golf in Plenty Road)
Sunday 11 February 10 am-1pm
Free BBQ Lunch. Free racquets to be given away.

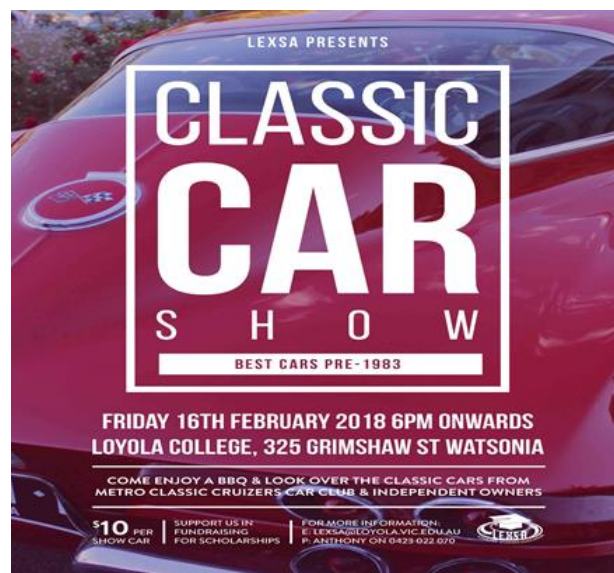
ANZ HOT SHOTS

GET YOUR KIDS INTO TENNIS
GET ACTIVE IN DAREBIN



Tennis is our Game

For More Information
John Gluyas 0409 403313
Ross Green (Coach) 0415174265



LEXSA PRESENTS

CLASSIC CAR SHOW

BEST CARS PRE-1983

FRIDAY 16TH FEBRUARY 2018 6PM ONWARDS
LOYOLA COLLEGE, 325 GRIMSHAW ST WATSONIA

COME ENJOY A BBQ & LOOK OVER THE CLASSIC CARS FROM METRO CLASSIC CRUIZERS CLUB & INDEPENDENT OWNERS

\$10 PER SHOW CAR | SUPPORT US BY FUNDRAISING FOR SCHOLARSHIPS | FOR MORE INFORMATION: E: LEXSA@LOYOLA.VIC.EDU.AU P: ANTHONY ON 0423 622 670



PAYING SCHOOL FEES ELECTRONICALLY

How does it work?

Direct Debiting allows the Catholic Development Fund (CDF), on behalf of your School, to deduct periodically from your account an agreed amount to cover your School Fees and Levies.

Benefits to You

CDF believes that this will assist families with the difficult task of budgeting for annual school fees and charges. One less major bill to worry about and it is free. It can save you time, money and hassles. No more problems with cheques left in school bags or the worry of sending cash.

Benefits to School

Transmission occurs automatically and is secure as no cash changes hands. The process of counting and banking funds will be greatly reduced, assisting school administration. CDF guarantees complete confidentiality on behalf of your School.

How to Apply

- Complete the attached **Authorisation form (Part "A")** and **Direct Debit Request form**.
- Sign both forms and return to the School office.
- The School will complete **Part "B"** and forward all completed forms to CDF (allow 14 days for CDF processing).

Variations

If you wish to alter the amount being transferred or cancel the authority, just advise your school.

Normal bank charges may apply, eg. dishonour fees if you have insufficient funds in your bank account.

(You will need to contact your bank or financial institution to establish if your account is suitable for direct debiting to occur. Credit card accounts and Passbook accounts are not suitable for direct debiting with CDF.)

December 2002

AUTHORISATION FORM

☐ New Authority ☐ Amendment (please ✓ appropriate box)

Part "A" (Parent to complete)

Date / /

I/We authorise the Catholic Development Fund to arrange for debiting the account, as described in the **Direct Debit Request** form with the sum of \$ (*minimum transaction amount \$20.00*).

☐ weekly ☐ fortnightly ☐ monthly ☐ quarterly
(please ✓ preferred option.)

commencing / / (allow 14 days)

until / /

Sign here

Sign here

(For joint accounts, two signatures are required)

Part "B" (School to complete)

Date / /

The above amount to be credited to:

School CDF Account No.

School CDF Account Name

SF No. (Debtor Number)

Parent's Name

DIRECT DEBIT REQUEST

Request and Authority to debit the account named below to pay the Catholic Development Fund

Request and Authority to debit	Surname or Company name Given names or A/CNAMES (You)
Insert name and address of financial institution at which account is held	request and authorize the Catholic Development Fund (Lic ID 11 9950) to arrange for any amount the Catholic Development Fund may debit or charge you to be debited through the Bulk Electronic Clearing System from an account held at the financial institution identified below subject to the terms and conditions of the Direct Debit Request Service Agreement (and any further instructions provided below)
Insert details of account to be debited	Financial Institution Name Address Name of Account BSB Number Account Number
Acknowledgment	By signing this Direct Debit Request you acknowledge having read and understood the terms and conditions governing the debit arrangement between you and the Catholic Development Fund as set out in this Request and in your Direct Debit Request Service Agreement.
Insert your signature(s) and address	Signature First Name Signature First Name First Name (Sign and print full names. For joint accounts, both names are required. If signing for a company include your capacity for signing, eg. Director) Address Date <u> </u> / <u> </u> / <u> </u>

FINANCIAL ASSISTANCE INFORMATION FOR PARENTS

Every Victorian child should have access to the world of learning opportunities that exist beyond the classroom. The Camps, Sports and Excursions Fund helps ensure that no student will miss out on the opportunity to join their classmates for important, educational and fun activities. It is part of making Victoria the Education State and the Government's commitment to breaking the link between a student's background and their outcomes.

CAMPS, SPORTS & EXCURSIONS FUND (CSEF)

School camps provide children with inspiring experiences in the great outdoors, excursions encourage a deeper understanding of how the world works and sports teach teamwork, discipline and leadership. All are part of a healthy curriculum.

CSEF is provided by the Victorian Government to assist eligible families to cover the costs of school trips, camps and sporting activities.

If you hold a valid means-tested concession card or are a temporary foster parent, you may be eligible for CSEF. A special consideration category also exists for asylum seeker and refugee families. The allowance is paid to the school to use towards expenses relating to camps, excursions or sporting activities for the benefit of your child.

The annual CSEF amount per student is:

- \$125 for primary school students
- \$225 for secondary school students

MORE INFORMATION

For more information about the CSEF visit www.education.vic.gov.au/csef

HOW TO APPLY

Contact the school office to obtain a CSEF application form or download from www.education.vic.gov.au/csef

NEW FOR 2018!

If you applied for the CSEF at your child's school in 2017, you do not need to complete an application form in 2018 unless there has been a change in your family circumstances.

You only need to complete an application form if any of the following changes have occurred:

- **new student enrolments;** your child has started or changed schools in 2018 or you did not apply in 2017.
- **changed family circumstances;** such as a change of custody, change of name, concession card number, or new siblings commencing at the school in 2018.

Check with the school office if you are unsure.



CSEF ELIGIBILITY

Below is the criteria used to determine a student's eligibility for the Camps, Sports and Excursions Fund (CSEF).

Criteria 1 – Eligibility

To be eligible* for the fund, a parent or legal guardian of a student attending a registered Government or non-government Victorian primary or secondary school must:

- on the first day of Term one, or;
- on the first day of Term two;
- a) Be an eligible beneficiary within the meaning of the *State Concessions Act 2004*, that is, be a holder of Veterans Affairs Gold Card or be an eligible Centrelink Health Care Card (HCC) or Pensioner Concession Card (PCC) holder, OR
- b) Be a temporary foster parent, and;
- c) Submit an application to the school by the due date.

* A special consideration eligibility category also exists. For more information, see: www.education.vic.gov.au/csef

Parents who receive a Carer Allowance on behalf of a child, or any other benefit or allowance not income tested by Centrelink, are not eligible for the CSEF unless they also comply with one of (a) or (b) above.

Criteria 2 - Be of school age and attend school in Victoria

School is compulsory for all Victorian children aged between six and 17 years of age inclusive.

For the purposes of CSEF, students may be eligible for assistance if they attend a Victorian registered primary or secondary school. Typically, these students are aged between five and 18 years inclusive.

CSEF is not payable to students attending pre-school, kindergarten, home schooled, or TAFE.

Eligibility Date

For concession card holders CSEF eligibility will be subject to the parent/legal guardian's concession card being successfully validated with Centrelink on the first day of either term one (29 January 2018) or term two (16 April 2018).

PAYMENT AMOUNTS

CSEF payment amount

The CSEF is an annual payment to the school to be used towards camps, sports and/or excursion expenses for the benefit of the eligible student.

- Primary school student rate: \$125 per year.
- Secondary school student rate: \$225 per year.

The CSEF is paid directly to your child's school and will be allocated by the school towards camps, sports and/or excursion costs for your child.

For ungraded students, the rate payable is determined by the student's date of birth. For more information, see: www.education.vic.gov.au/csef

Year 7 government school students who are CSEF recipients are also eligible for a uniform voucher. Secondary schools are required to make applications on behalf of parents so please register your interest at the school.

HOW TO COMPLETE THE APPLICATION FORM

NOTE: ALL SECTIONS MUST BE COMPLETED BY PARENT/LEGAL GUARDIAN

1. Complete the PARENT/LEGAL GUARDIAN DETAILS section.
Make sure that the Surname, First Name, and Customer Reference Number (CRN) details match those on your concession card. You will also need to provide your concession card to the school.
If you are claiming as a Foster Parent or a Veteran Affairs Pensioner, you will need to provide a copy of documentation confirming your status as a temporary Foster Parent or provide your Veterans Affairs Pensioner Gold card to the school.
2. Complete the STUDENT/S DETAILS section for students at this school.
3. Sign and date the form and return it to the school office as soon as possible. The CSEF program for 2018 closes on 29 June, 2018.

CSEF payments cannot be claimed retrospectively for prior years.

Queries relating to CSEF eligibility and payments should be directed to the school.



CAMPS, SPORTS AND EXCURSIONS FUND (CSEF) APPLICATION FORM

School Name

School REF ID

Parent/legal guardian details

Surname _____

First name _____

Address _____

Town/suburb _____ State _____ Postcode _____

Contact number _____

Centrelink pensioner concession **OR** Health care card number (CRN)

- - - **OR**

☐ Foster parent* **OR** ☐ Veterans affairs pensioner

*Foster Parents must provide a copy of the temporary care order letter from the Department of Health and Human Services (DHHS).

Student details

Child's surname	Child's first name	Student ID	Date of birth (dd/mm/yyyy)	Year level

I authorise the Department of Education and Training (DET) to use Centrelink Confirmation eServices to perform an enquiry of my Centrelink customer details and concession card status in order to enable the business to determine if I qualify for a concession, rebate or service. I also authorise the Australian Government Department of Human Services (DHS) to provide the results of that enquiry to DET.

I understand that:

- DHS will use information I have provided to DET to confirm my eligibility for the Camps, Sports and Excursions Fund and will disclose to DET personal information including my name, address, payment and concession card type and status.
- this consent, once signed, remains valid while my child is enrolled at a registered Victorian school unless I withdraw it by contacting the school.
- I can obtain proof of my circumstances/details from DHS and provide it to DET so that my eligibility for the Camps, Sports and Excursions Fund can be determined.
- if I withdraw my consent or do not alternatively provide proof of my circumstances/details, I may not be eligible for the Camps, Sports and Excursions Fund provided by DET.
- information regarding my eligibility for the Camps, Sports and Excursions Fund may be disclosed to the Victorian Department of Health and Human Services and for State Schools Relief for the purpose of evaluating concession card services or confirming eligibility for assistance.

You are able to request access to the personal information that we hold about you, and to request that any errors be corrected, by contacting your child's school.

Signature of applicant _____

Date ____ / ____ / ____





What's on at school?

Find out with FlexiBuzz

www.flexibuzz.com

Download the app!

GET IT ON Google Play

Download on the App Store

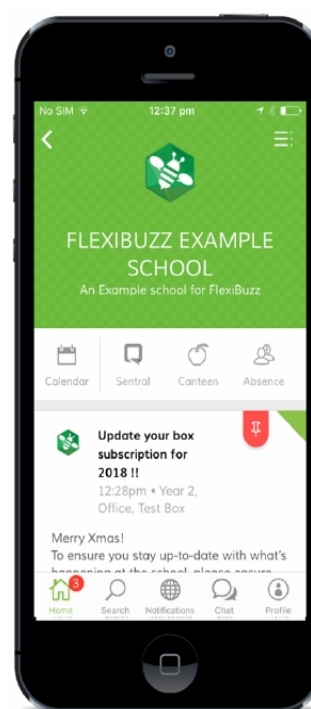
Our Lady of the Way is using the FlexiBuzz app to communicate with you on everything that is happening at school.

Download the app, subscribe to your class group and get alerted on news, events and more....

Stay in touch with FlexiBuzz

- STEP 01** Sign up for FlexiBuzz and then login
 Search "FlexiBuzz" in your app store. Go to web.flexibuzz.com and click "Sign Up".
- STEP 02** Connect to us
 Select the 'Search' icon and type in our name. Select us from the results.
- STEP 03** Select your communication groups
 Click the 'Add' icon beside the communication groups that apply to you.
- STEP 04** Get started
 Click the 'Home' icon to view our recent posts.

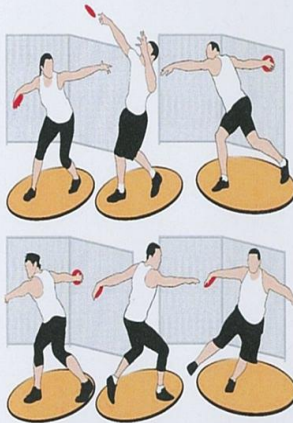
For further information or assistance please visit our website www.flexibuzz.com or email us via support@flexibuzz.com

Now with the app installed on your smart phone you will receive all the latest news and events from us...

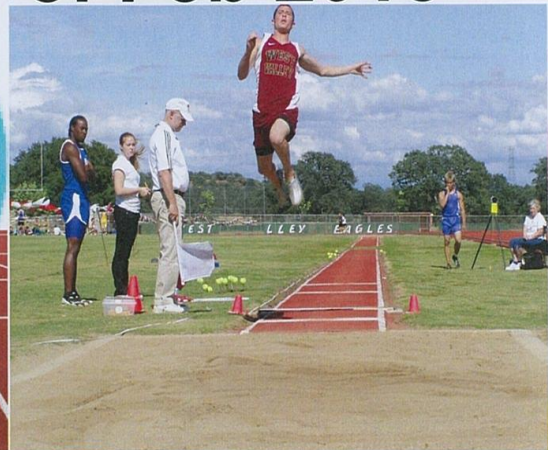


Our Lady of the Way Year 3,4,5 & 6 Athletics Trials! Friday the 16th of Feb 2018



Remember to bring your hat, a water bottle and please wear your sports uniform!

Parents welcome! Good luck!



Parish of Our Lady of the Way Kingsbury

Presbytery: 13 Green Ave, Kingsbury, 3083



Parish Priest: Fr Terry Bergin
Email: terrybergin1@bigpond.com

Tel: 9462 1221

School Tel: 9460 6684

Parish Website: OLV Kingsbury

Mass Timetable

Saturday – Vigil Mass:	6.00PM
Sunday:	8.00AM and 10.00AM
Weekdays:	10.00AM
Sacrament of Reconciliation:	Saturday from 5.15 to 5.45PM
Rosary Monday to Saturday:	9.30AM
Divine Mercy Chaplet	After Mass Daily
Exposition of the Blessed Sacrament:	Friday from 9.00 to 9.30AM

Baptisms and Marriages by appointment: Please ring 9462 1221

Entrance Antiphon: O come, let us worship God and bow low before the God who made us, for he is the Lord our God.

Communion Antiphon: Let them thank the Lord for his mercy, his wonders for the children of men, for he satisfies the thirsty soul, and the hungry he fills with good things.

Readers for Sunday Mass

4 th Feb	6pm E Gleeson	8am C Nguyen	10am I Lowe
11 th Feb	6pm M Smyth	8am P Hearity	10am B Hayes

Extraordinary Ministers of Holy Communion

4 th Feb	6pm M Nolan	10am N Buchan
11 th Feb	6pm K Zanini	10am I Lowe

OLW Church Cleaning Roster

17 th Feb	Professional Cleaners
3 rd Mar	B Bowlen M Magnacca P Matthews

OLW Sacristy Linen Laundering Roster

4 th Feb	Lan
11 th Feb	Phil Tobey

31st Jan	Church Account	\$994.50
	Presbytery Account	\$711.00

4th Feb: Sunday 10am mass. Today we remember the anniversary of Thomas O'Connor.

15th Feb: Pastoral Leadership Team meeting on Thursday 7pm in the Presbytery.

28th Feb: Parish lunch, last Wednesday of Feb, 12pm at Coopers, Plenty Rd Bundoora.

Loyola College Classic car show: on Friday 16th Feb 6pm onwards, 325 Grimshaw St Watsonia.
For more information please contact Monica on 9433 0767 or email lexsa@loyola.vic.gov.au

Lenten meeting: There will be a Lenten meeting @ 10.45am on Friday 16th Feb on Catholic Social Teaching, with a follow up session one month later (date to be decided). It would be great if people attending could commit to both sessions, which will be 90 minutes in duration and held in the church foyer. A parishioner Jeff Wilde from Catholic Care will be our moderator for both sessions. All welcome.

St Margaret's Anglican Church Eltham: Pancakes Plus: to support the people of Bangladesh following floods caused by severe monsoonal rains.

At St Margaret's Anglican Church Pitt St Eltham on Shrove Tuesday 13th Feb @7.30pm. Minimum donation \$15.00, all donations tax deductible. RSVP preferred but not essential to parish office ph 9439 9238 or parishoffice@stmargaretseltham.org.au

All proceeds to Act for Peace, the international aid agency of the National Council of Churches in Australia. An initiative of the Do Justice Group of St Margaret's.

Child safety: We, at Our Lady of the Way, Kingsbury, are committed to ensuring that our children are safe at all times. In accordance with our Church teachings and the requirements of the Victorian State Government, we have in place a number of guidelines to safeguard our children. For further information, please refer to our church website: www.olwkingsbury.org.au and click on *Protect Our Children* tab.

ASPIRE FINANCIAL & RETIREMENT PLANNING PTY LTD

SPECIALIST IN TAXATION, SUPERANNUATION, RETIREMENT PLANNING, CENTRELINK ISSUES AND ESTATE PLANNING. CONTACT MIKE OR GAVIN JOLLEY ON 93003388

Sue & Chris Schembri – Astro Graphics: 93507033. For All Your Designing & Printing Needs.

Do you need advice or help from an interior designer? Phone: Thien (Nathan) Nguyen. 0434 359 709.

Need a computer expert? Call Tony on 0423694938 for a free quote.

For Home, carpet, window, garden & Lawn maintenance contact Georgeta 0415366709

A & G Home and Office Furniture Removals. 94643931.