



OLW NEWS 2020

Tel: 9460 6684
Email: principal@olwkingsbury.catholic.edu.au

Issue: 15

Date: Monday May 18 2020

Dear Parents & Families,

Thank you to everyone for their continued work in assisting your children with their Learning. It has been an amazing effort by everyone, successfully completing over 660,000 questions!

By now, I am sure that families would be aware of the back to school plan proposed by the Victorian Government. In consultation with the Catholic Education Commission of Victoria Ltd (CECV), and following advice from the Chief Health Officer, a decision has been made that schools are to begin a phased return to onsite schooling.

- In the **first stage**, students in **Prep - Year 2** will return to school from **Tuesday 26 May**.
- In the **second stage** of the return to onsite schooling, **Years 3 - 6** will return to school from **Tuesday 9 June**.

Once a year level has returned, all students will be expected to attend school as normal. This means that if you choose to keep your child/children home after their year level has returned to onsite schooling, there will be minimal support for learning from home as the teacher will be teaching the class during the day.

Whilst the Chief Health Officer has advised that students will not be required to maintain physical distancing at school, there will be a number of important changes to school operations, consistent with health advice given to all schools, that will be made at OLW. Important changes to note that directly affect parents will include:

- Only students will be allowed on the school site.
- Students will assemble on a yellow dot at the black gates and will be temperature checked prior to entry at the beginning of the school day.
- There will be staggered entry and exit times for students to reduce gate congestion.

- **Entry -**
Year 2/3 – 8.35am
Year 1/2K – 8.40am
Year 1/2MS – 8.45am
Year Prep – 8.50am
- **Exit -**
Year Prep – 3.10pm
Year 1/2MS – 3.15pm
Year 1/2K – 3.20pm
Year 2/3 – 3.25pm
After School Care – 3.30pm
- Staff will assemble students on the Basketball Court at the end of the day.
- Parents will wait outside the black gates on the yellow dots at their designated time. The Person in Charge will call to the teacher for the child of the respective parent on the first dot and they will then exit the school.
- If you miss your time for collecting your child, then you will have to wait until other groups have cleared the school. Your child's teacher will remain with the child until they are collected.

Although these interim arrangements are only in place for the next two weeks until all students resume, we will need the support of all families to ensure that this is a safe and smooth process. Additional protocols will be added when all students are attending.

Our 'Wellbeing Wednesday' online weekly social catch-up commences this week. Protocols and login information were posted on our app and website last Thursday. This will continue each Wednesday for Years 3 – 6 until regular classes resume.

Class teachers will continue to make contact with families by phone on the day they are scheduled for onsite supervision and will continue to be available online daily between 9.00am and 3.30pm until all classes have resumed on June 9. They will continue to monitor your child's progress and provide feedback on your child's work and level of involvement in their learning.

Next Sunday, May 24, is the Feast Day of Our Lady of the Way. Usually we have the opportunity to gather as a school and celebrate our Feast Day. However, this year due to the COVID-19 restrictions we will not have the chance to gather together and celebrate Mass with the Parish Community or undertake any whole school activities. Therefore, we have organised an at home activity that students can undertake with their family. Posted with our Learning from Home activities last night were some images of Our Lady of the Way. We are asking each child to either select one of the images to colour or paint, or they can create their own image of Our Lady of the Way. Once completed, email through a copy of your artwork so that we can create a COVID collage of our parish patron.

All work will continue to be posted weekly on Sunday evening on our School app and our School website under the Learning from Home tab at: <https://www.olwkingbury.catholic.edu.au/news-events/learning-from-home/>

Don't forget to check out and subscribe to the OLW Learning Channel at: <https://www.youtube.com/channel/UCYNzWrC-rRpl11wQVfYA1Q/featured>

Please keep the pictures and artwork coming in weekly by email to me or your class teacher as they are a great inspiration to everyone.

Have a great week!

Kevin Burke

WORD OF THE WEEK

Congratulations to everyone who found out that cabinet means 'a cupboard with shelves or drawers for storing or displaying articles' or 'the committee of senior ministers responsible for controlling government policy'.

Our word for this week is:

PROTOCOL

Find out it's meaning and origin and see if you can add this word to your vocabulary over the next week!



ENROLMENT

Limited places available for Year 7 2021.
Enrolment applications for Year 7 2022
closing 21 August 2020.

For information please contact our College Registrar:
03 9433 0203 or registrar@loyola.vic.edu.au

VIRTUAL TOURS

Visit our website and explore our campus through a virtual tour, then meet our Principal live online to answer all your questions.

Tuesday 5 May
Wednesday 13 May

Friday 22 May
Tuesday 26 May

TO REGISTER FOR A VIRTUAL TOUR VISIT

loyola.vic.edu.au/bookatour



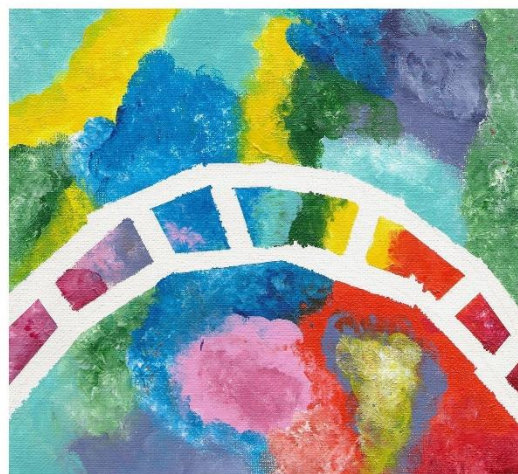
LOYOLA COLLEGE

A Catholic Co-Educational College in the Ignatian Tradition

A: 325 Grimshaw Street, Watsonia P: 9434 4466 W: www.loyola.vic.edu.au



Learning from Home Week 5 Photos



Learning from Home Week 5 Artwork