



OLW NEWS 2021

Tel: 9460 6684

YouTube: [OLW Learning Channel](#)

Email: principal@olwkingsbury.catholic.edu.au

Issue: 34

Date: Monday October 25 2021

Dear Parents & Families,

We excitedly look forward to having all year levels at school over the course of this week and full time next week! Our students have been very keen to return and reconnect with their friends and the staff. Last week we had most levels onsite, and I am sure that our Year 3/4 students can't wait until tomorrow to recommence some onsite learning.

RETURN TO SCHOOL ARRANGEMENTS

Due to yesterday's government announcement on bringing forward the return to school plan, from **tomorrow**, Arrival and Dismissal Times for all students (Prep – Year 6) will be in House Teams once again.

- Entry -
Latrobe – 8.30am
Bates – 8.40am
Kelly – 8.50am
- Exit -
Latrobe – 3.10pm
Bates – 3.20pm
Kelly – 3.30pm

Modified arrival and dismissal times will remain operational until the end of term.

Please do not wait around or congregate in the carpark, once you have collected your child, you must leave directly.

Once a year level has returned, all students are expected to attend school. This ruling by the government means that if you choose to keep your child at home, you are responsible for their learning and staff will not be monitoring emails for onsite learning days.

Please remember that only staff and students are permitted on the school site.

CURRENT GOVERNMENT YEAR LEVEL RETURN TO SCHOOL PLAN

October 25 - 27	Year Prep
October 26 - 27	Year 3 & 4
October 28 - 29	Year 1 & 2 Year 5 & 6
November 1	Closure Day
November 2	Cup Day
November 3	ALL STUDENTS

*Please note that this government plan is subject to change. If any dates are changed, we will let you know through our school app once official advice is received by the school.

FACE MASKS FOR STUDENTS

As you would be aware, face masks are recommended to be worn indoors for Years Prep – 2 and are mandated to be worn indoors for Years 3 – 6. One of families is currently making masks for children and is offering families the opportunity to purchase a mask for their child with the OLW school logo. If you are interested in purchasing a mask, please see the attached flyer in the newsletter.

Please be aware that we have a number of children with a medical condition that have a lawful exception for not wearing a mask.

KINGSBURY OSH CARE

Families that use OSH Care would have received an email informing them that the Kingsbury Program has now received permission to host an After School Program at OLW from today. It is anticipated that this will run for approximately two weeks at OLW, but is subject to changes in government restrictions. An excerpt of the email explaining the modified procedures is included overleaf in today's newsletter.

CLOURE DAY – MONDAY NOVEMBER 1

Please mark on your diary that next Monday, November 1, is a School Closure Day as we work on planning, reporting and structures for 2021 and also for the 2022 school year. As it is a School Closure Day, there will be no onsite supervision for students of Authorised Workers, no onsite learning for Prep students, and no Google Meet sessions for classes. However, teachers will make available a Learning from Home schedule for the day for those families who wish to keep their child engaged in their learning on the day.

MENTAL HEALTH SESSIONS

Matthew will continue running two online sessions each Monday until all students return. These are group sessions for parents to join in dialogue with Matthew as he presents strategies around some particular aspects that may be affecting families at the moment. These sessions are

designed to provide strategies and advice to support the great work of our families.

Session Times are:

10.30am – Year 3 – 6 Parents

11.30am – Prep – Year 2 Parents

October 25 Topic

Managing low mood and depression in children

Meeting Link:

<https://meet.google.com/jib-yhyo-hbt>

Families who are not able make either of the session times due to work commitments will be able to access a pre-recorded version of the content from our OLW Learning Channel each Wednesday, by following the link which will be forwarded through SkoolBag.

Any families that would like to access previous sessions can also follow the link below to view a pre-recorded copy of the content presentation for each session.

Strategies to assist during lockdown

<https://youtu.be/0qFxmP1yVG0>

Keeping things 'normal' for children

<https://youtu.be/Zimm1xS7B4A>

Managing anxiety and low mood

<https://youtu.be/nnO8qRBtMyg>

Communicating with your child(ren)

<https://youtu.be/GrOuKr0Mcls>

Addressing Anxiety and Fears

<https://youtu.be/F0zrqYU260k>

Preparing children for return Onsite

https://youtu.be/IVGLiaJd_CU

How to avoid passing your Anxiety onto your children

<https://youtu.be/aPhQjxoA5bs>

SCHOOL HATS

School Hats are compulsory at all times in Term 4 when the students are outside, and the use of sunscreen is highly recommended. Students may now wear their summer uniform on the warmer days. As a Sunsmart School the policy is: 'No Hat, No Play'.

WEEKLY PHOTOS

Don't forget to keep sending through some photos of your children engaging in their learning or activities over the week to be compiled into our final weekly video.

Stay safe and we look forward to having all classes onsite soon!

Kevin Burke

WORD OF THE WEEK

Congratulations to everyone who found out that benevolent means 'well-meaning and kindly', or 'organized for the purpose of doing good'.

Our word for this week is:

PRODIGIOUS

Find out it's meaning and origin and see if you can add this word to your vocabulary over the next week!

OSH Care

Dear Families,

As a follow on to last week's email, I'd like to thank you for your patience and understanding while we've navigated how to temporarily provide a split program for Kingsbury and OLW children.

I'm pleased to say that we now have a structured plan for the coming weeks that enables everyone to access the OSHC program. We hope this will provide a smooth and gradual transition back to a mixed program in the shared OSHC room.

For the two weeks beginning this Monday the 25th of October (unless government advice changes):

Our Lady of the Way Families

After School Care will be operating from the OLW hall and the surrounding outdoor space. This program will be operated by two of our regular staff members each day for a maximum of 20 children. Unfortunately, we are not able to offer a Before School Care program for OLW children just yet. The program will not run on the school Closure Day (Monday the 1st).

To attend, you **MUST** complete and return the attached permission and booking form as soon as you can. This is a legal document to acknowledge that your child will be off the regular OSHC premises (just like an excursion).

For the week or two following this, we'll likely continue a split program, but with the two groups split on the Kingsbury school grounds. I'll be in touch to confirm this as we get closer to the date.

Please send through an email to confirm your bookings or to ask any questions you may have. Looking forward to seeing everyone soon!

Kind Regards,

Jill Holmes

Out of School Hours Care Coordinator

Kingsbury Primary School

Ph: 9462 2354

Term 4, 2021

Regular Outing Permission and Booking Form

As a part of our Covid-safe plan and the staged return to on-site schooling, we have reviewed the ways in which we can best minimise the potential spread of Covid throughout the Kingsbury and Our Lady of the Way school communities. Our aim is to reduce close contact between children and parents at the two schools and therefore lessen the likelihood of numerous families being forced to isolate.

For the two week period between Monday 25th October and Friday 5th November (unless government or health advice changes), we will be running an After School Care program for Our Lady of the Way children from the OLW hall and surrounding outdoor space. This program will be operated by two of our regular staff members each day, for a maximum of 20 children (a 1:10 ratio). Unfortunately we are not able to offer a Before School Care program for OLW children during these two weeks.

The program will offer experiences similar to those usually offered at Kingsbury; arts and crafts, reading, outdoor sports and play, and so on. A simple afternoon tea will be provided each day. Risk assessments are available upon request.

When collecting your child, please wear a mask, use the entrance/exit *outside* of the black gates, sign them out on the roll and be on your way as quickly as possible.

The following form must be completed for your family to be able to utilise the program during this staged return to school period.

Please tick the days you require

After School Care 3:30pm – 6:00pm				
Monday 25 th October <input type="checkbox"/>	Tuesday 26 th October <input type="checkbox"/>	Wednesday 27 th October <input type="checkbox"/>	Thursday 28 th October <input type="checkbox"/>	Friday 29 th October <input type="checkbox"/>
Monday 1 st November CLOSED - School Closure Day	Tuesday 2 nd November CLOSED - Melbourne Cup Day	Wednesday 3 rd November <input type="checkbox"/>	Thursday 4 th November <input type="checkbox"/>	Friday 5 th November <input type="checkbox"/>

I (the parent/guardian of the child/ren named below) agree to allow my child/ren to participate in the Kingsbury OSHC Regular Outing program at Our Lady of the Way Primary School. I agree to waive any claims against Kingsbury Primary School and its employees which my children and I may have against them arising out of or in relation to the program, other than where negligence can be proven.

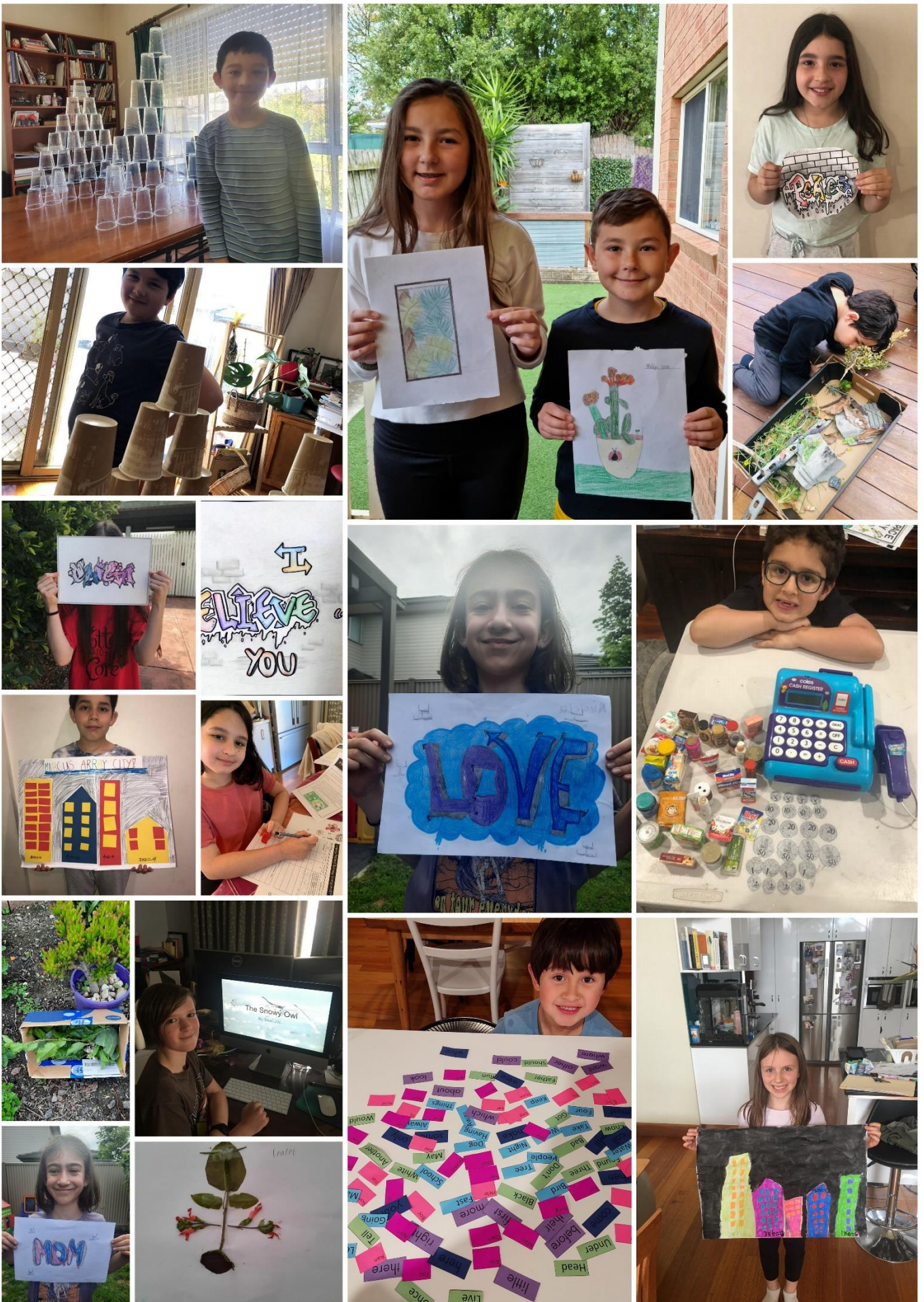
In the event that my child becomes ill or injured whilst attending and I am unable to be contacted, I authorise the Coordinator to consent to my child seeking medical treatment and/or transportation by ambulance as may be deemed necessary by a medical practitioner.

Child/ren's names: _____

Parent's name: _____ Contact number: _____

Signature: _____ Date: _____

If you need to reach a child or staff member at the OLW site, please contact our direct line (9462 2354) and we will put you through to the person in charge.



Week 3 – Students @ Work & Play

FACE MASKS



\$5 each or 3 x \$12

Order Form	
Date	
Name	
Phone	
Student Name	
Grade	
Quantity	
Total	

Payment Options

Bank transfer only

BSB 733 -396

Account 596362

Delivery Instructions

We will contact you once your order is ready. Select your preferred option:

Collection at School Office* ☐ Deliver to the student ☐

* Days/time to be confirmed

Please send your complete order form and confirmation of payment to:

vinyl.melbourne@gmail.com

Thanks



Google Meet

Sessions with Matthew

Meeting link: <https://meet.google.com/jib-yhyo-hbt>

Meeting code for iPad & tablet users: [jibyhyohbt](#)

Years 3 - 6	10:30am - 11:00am
Years P - 2	11:30am - 12:00pm



JOIN LITTLE ATHLETICS TODAY!

READY SET GO FOR FAMILY, FUN & FITNESS

Little Athletics is the start of the Olympic journey for all children aged 5-15 of all abilities.

Register online www.lavic.com.au go to find a centre > 3073 Reservoir

Season runs from November to March on Saturday Mornings from 8:30am. Registrations also welcomed throughout the season.

A great active activity for the kids to get out of the house post lockdown. Make new friends while keeping active in a fun, inclusive and friendly environment. Preston Reservoir LAC focuses on athletes improving week by week achieving personal bests!

NEW SEASON COMMENCES EARLY NOVEMBER. STAY TUNED ON OUR SOCIAL MEDIA, TEAM APP AND WEBSITE FOR IMPORTANT ANNOUNCEMENTS IN THE COMING WEEKS

FREE TWO WEEK TRIAL FOR NEW ATHLETES TO LITTLE ATHS

TO SIGN UP FOR YOUR FREE COME AND TRY TRIAL PLEASE GO ONLINE TO WWW.LAVIC.COM.AU OR CONTACT US FOR MORE INFORMATION

PRESTON RESERVOIR LITTLE ATHLETICS CENTRE

Athletics Pavilion, Edwardes Park Lake, Reservoir

FIND US ON SOCIALS



President Shayne Matzkows 0413 138 552

Secretary Joanne McIntyre 0411 755 865

Email prestonreservoir@lavic.com.au

Website www.prestonreservoirilac.com.au