



OLW NEWS 2021

Tel: 9460 6684

YouTube: [OLW Learning Channel](#)

Email: principal@olwkingsbury.catholic.edu.au

Issue: 1

Date: Monday January 31 2022

Dear Parents & Families,

Welcome to the 2022 School Year! We hope that the break has been enjoyable for families and everyone is feeling refreshed and rested.

STAFFING UPDATE

We welcome Miss Hannah Walsh who will be teaching Year 4/5 and Mrs Jacinta Cashen who is taking over the Office Administration role as Mrs Jongebloed is on Long Service Leave and will retire at the conclusion of the leave. Mr Mizzi is also on Long Service Leave and Mrs Myers has taken over his position and will also be teaching Music in 2022. We also congratulate Mrs Huong Lamont and her husband Justin who have announced that they are excitedly expecting their first child in mid 2022.

COVID-19 PROTOCOLS

Schools have a new set of protocols for the commencement of the 2022 school year. There have been some modifications to protocols for schools in the latest government advice which will impact all families and schools for the commencement of the school year.

- **Rapid Antigen Tests** – All students will be provided with a pack of 5 tests in Week 1 & Week 3. Students are required to test twice weekly (school days) on a voluntary basis. Students will do the tests at home and must report any positive test results to their school. If a student receives a positive test result at any time, they must report this through the Department of Health system (Rapid Antigen Tests | Coronavirus Victoria) or via the coronavirus hotline at 1800 675 398.
- **Management of suspected cases** –
 - As soon as practicable after becoming aware of a suspected case in a student – and if that person has been onsite while displaying symptoms, or 48 hours before they developed symptoms – the principal must take the following actions.
 - Let the person know they need to follow guidelines in the Testing Requirements for Contacts and Exposed Persons. If applicable, the effected person/s should follow the COVID-19 RAT procedure, which recommends a symptomatic person takes a COVID-19 test.
 - If the symptomatic person is confirmed to have COVID-19, the principal must follow the steps under the below section, Confirmed Cases and household contacts at school.

Confirmed Coronavirus Cases –

- Students who report a positive result must isolate for seven days and not attend school during that period.
- Where a student is a household contact of a positive case (that is, they have spent more than four hours with someone who has COVID-19 inside a house, accommodation, or care facility) they must inform the school and isolate for seven days and not attend school during that period.
- Principals must notify the school community when a student or staff member has (or multiple students or staff members) have returned a positive COVID-19 test result and had attended the school. The notification should include: Dates of attendance; Affected group / cohort / year levels; any relevant extracurricular activities. The notification can be provided to only the affected group / cohort / year level or to the whole school.
- In the event of multiple positive cases at a school, the Department of Health (DH) will work with the relevant regional office to determine the most appropriate response and any additional actions that should be taken.
- **Air Purifiers** - supplied by the government have arrived at the school and have been installed in all the classroom areas.
- **Face Masks** - are still to be worn by all students in Years 3 – 6 when indoors unless a medical exception applies. They are also recommended for students in Years Prep – 2.
- **Managing Learning during Isolation**
 - A major issue for schools will be lack of available staff during an outbreak. Therefore, a 5-day template of schoolwork will be available for students to undertake at school if classes split at school.
 - A modified 5-day Learning from Home template available for students to undertake (voluntary) if isolating based on revision activities in Maths & English (IXL), online reading portals access, & an Inquiry / Research activity
- **Entry & Exit Restrictions-**
 - Access to the school site will still be limited to staff and students to minimize contact with others. Staff will make themselves

available to speak with any parents in a COVID-Safe manner. Our goal is try and have the least disruption possible to the students learning in 2022.

- o Schools are also still required to reduce congestion at drop-off and collection times. Therefore, as we only have one entry gate, we will remain with the staggered entry and exit times to avoid congestion at the gate and in the carpark area until further notice. Parents are still required to wear a mask if the 1.5m social distancing protocol cannot be adhered to. We will need your assistance in order to ensure that we comply with all guidelines. Drop off and pick up times are as follows:

House	Drop Off Time	Pickup Time
Latrobe	8.30am	3.10pm
Bates	8.40am	3.20pm
Kelly	8.50am	3.30pm

OLW SCHOOL APP – SKOOLBAG

OLW uses the SkoolBag App for notifications to families, school newsletters and general post about school activities. Please see **overleaf** for how to install the app. Current users will need to update their child’s class details for 2022. After this week, the weekly school newsletter will only be available electronically through Skoolbag.

CONTACT & EMERGENCY DETAILS

If there is a change of address, mobile number, home, work phone number or email please notify the office so that our records can be updated. You must also make the change in Operoo so that all forms for school extra-curricular activities reach the correct email address.

BEFORE & AFTER SCHOOL CARE

If your child is attending the Before and/or After School Care Program, please notify the school Office as soon as possible. We also keep a list of students who attend the Program, showing on what days of the week they attend. This reduces confusion and enables us to know where each child is after school.

Parents who use the Kingsbury staff car park must enter and exit the carpark slowly and safely - being mindful of students who may be around and other cars in the carpark.

BE SUNSMART – WEAR A HAT!

The School Hat must be worn during Term 1 and in Term 4. Children who do not have a school hat are required to sit under the veranda or on the deck at recess and Lunchtime. (i.e. No Hat, No Play)

Keep safe and well, and enjoy the start of a new and exciting school year!

Kevin Burke

MEDICATION REGISTER:

All schools are required by law to have a medication register book. When your child requires medication, we require a parent / guardian to fill out this book on what medication your child requires and when the medication is required. Medication must be in its original packaging and the dosage must be specified on the packet and confirmed by the parent in writing.

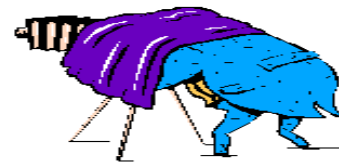
As a general rule, if your child requires medication for an illness, then they are not well enough to attend school.

PHYS ED LESSONS

Physical Education lessons will be held on WEDNESDAY this year. Students are asked to wear their sports uniform and runners each WEDNESDAY.



SCHOOL PHOTOS



Our Lady of the Way School Photo Day will be on **Tuesday, March 29, 2022**
More details to follow closer to the date.

BEFORE / AFTER CARE REPLY SLIP:

Please return this reply slip to the OLV School Office.

Yes, my child / children will use the after school care / before school care on:

PLEASE TICK (✓)

MONDAY	A.M.....	P.M.....
TUESDAY	A.M.....	P.M.....
WEDNESDAY	A.M.....	P.M.....
THURSDAY	A.M.....	P.M.....
FRIDAY	A.M.....	P.M.....

FAMILY SURNAME:

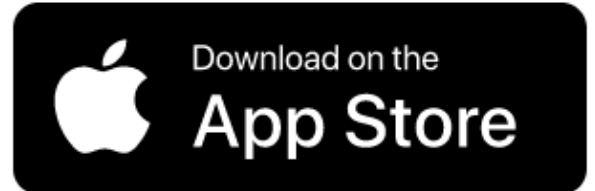
CHILD/REN:

SIGNATURE:

How to Install SkoolBag

Instructions for parents installing the SkoolBag app.

The SkoolBag school app is the best way for parents to stay up-to-date with the school calendar, last minute forms, newsletters and all school communications. Get started with SkoolBag in only a few minutes. Just follow these simple steps:



Download the SkoolBag App

Open the Apple App Store or the Google Play Store and search for and install 'SkoolBag'. Alternatively, click on the Google Play or Apple App Store icons above and download the SkoolBag App.



Create an account

Open the SkoolBag app and Click 'Sign Up'. Enter your email address, create a password and click on 'Sign Up'



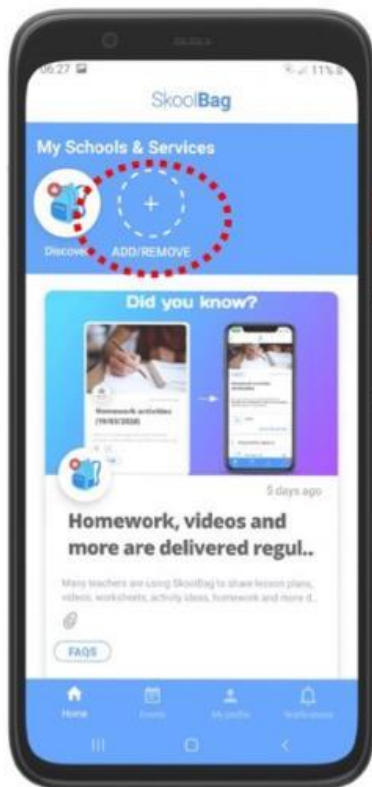
Open the confirmation email sent to your mail inbox and confirm your account



Add your school

Open the app, and Click 'Add/Remove'

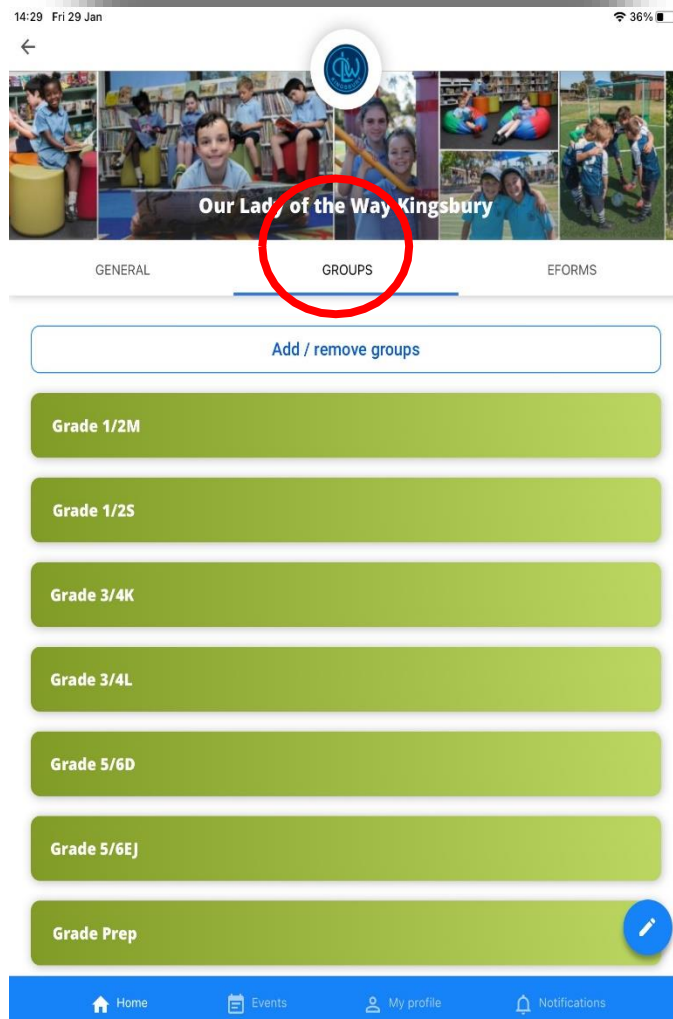
Click '+' to add your school, now you can see your school, under My Schools & Services



Click on **'Groups'** to Add the groups that you or your child/ren wish to receive notifications for.

Click on **'General'** to see School Newsletters and announcements.

Click on **'Eforms'** to submit Absentee Forms.



You are now connected to OLW to receive all our latest news and information.

If your notifications are switched off, please make sure that you manually check the app regularly to ensure you have the latest information for events, school or parish news.